



LEARN HOW TO MEASURE YOUR KITCHEN IN THIS SIMPLE GUIDE

Let us make the process of redesigning your kitchen simpler with this easy-to-follow guide.

This document will teach you some of the basics of measuring your kitchen.

The second page of this document will show you what you need and a basic model of an example kitchen.

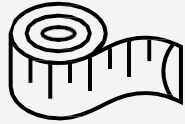
The rest of the pages will walk you through the steps of getting your design set up and submitted.

Check us out online at www.TheCabinetSaver.com

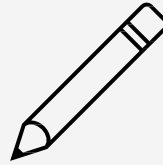
or

Visit our showroom at
1503 S. Colorado Street Salem, VA 24153

ITEMS YOU WILL NEED



TAPE MEASURER



PENCIL OR PEN

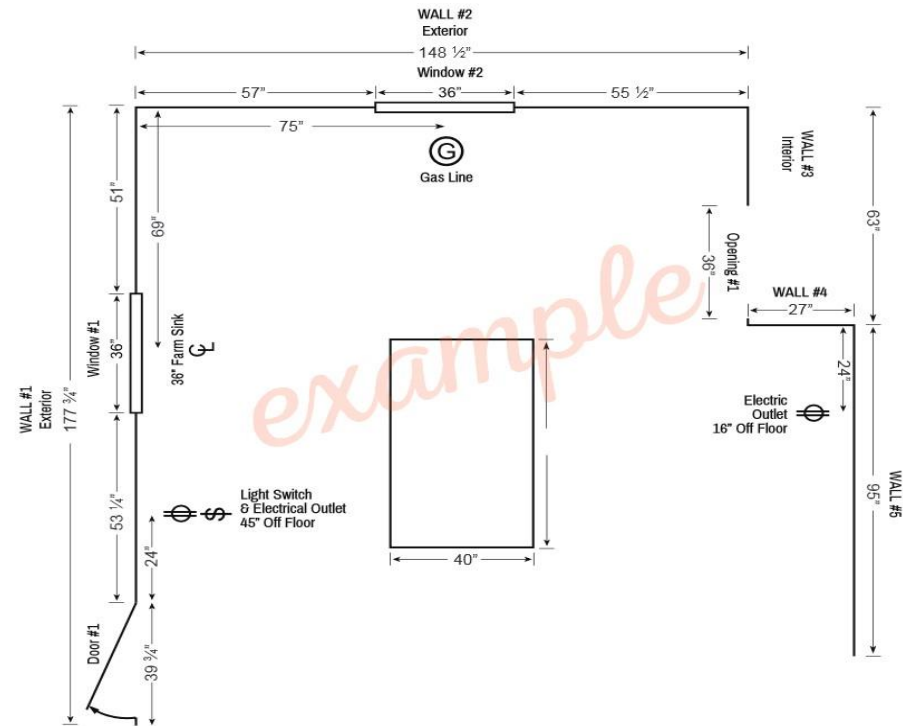


THIS MEASURING GUIDE

USE THIS EXAMPLE AS A REFERENCE WHEN DOING YOUR MEASURING

CONTACT INFORMATION

Name:	PHONE:
Email:	DOOR STYLE FINISH:
Email:	DESIGNER:
Address:	
City:	
State:	
Zip:	



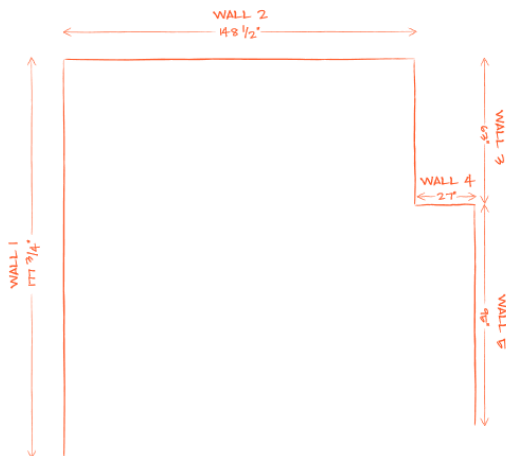
Utility/Mechanical Legend: Use these symbols on your floor plan.

- Center Line
- Light Switch
- 220V (Electric Stove)
- Outlet
- Gas

STEP ONE: MEASURE YOUR SPACE

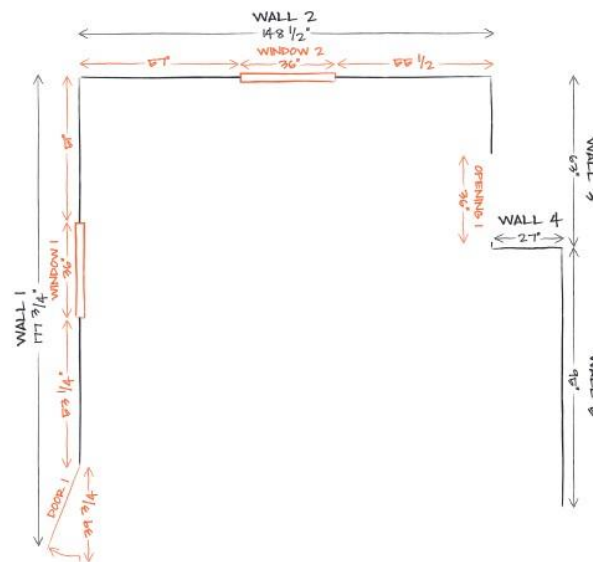
A. Starting in the left corner, measure each wall in the space that will contain cabinets and record those measurements (in inches) on the "Floor Plan Design Grid" located on the last page of this Measuring Guide.

B. Number each wall on the floor plan.



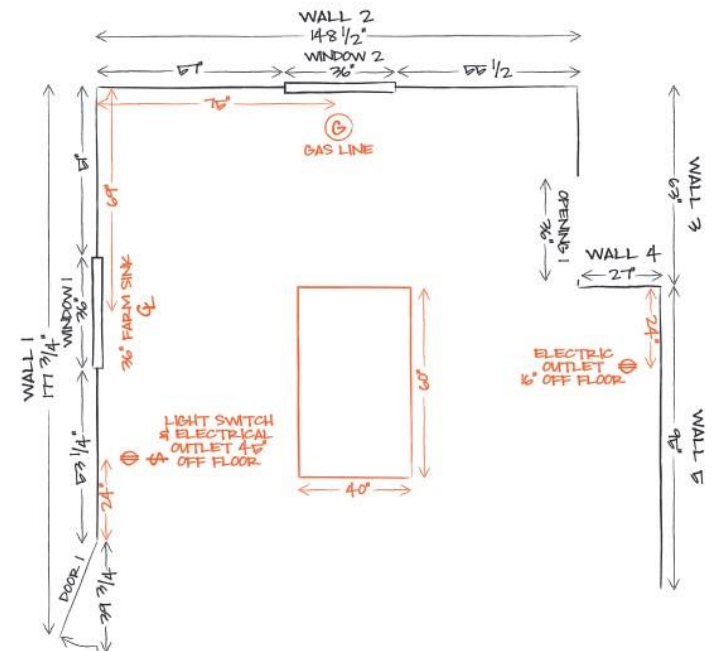
STEP TWO: DOORS, WINDOWS, ROOM OPENINGS

- A. Locate and measure doors, windows, and room openings.
- B. Record and number each door, window and room opening on the grid.
- C. Record the corresponding dimensions in the measurement charts below.



STEP THREE: OBSTACLES

- A. Locate and measure obstacles such as electrical outlets, vents, pipes, radiators, etc.
- B. Record any islands you already have or wish to add.
- C. Record and number each obstacle on the grid.



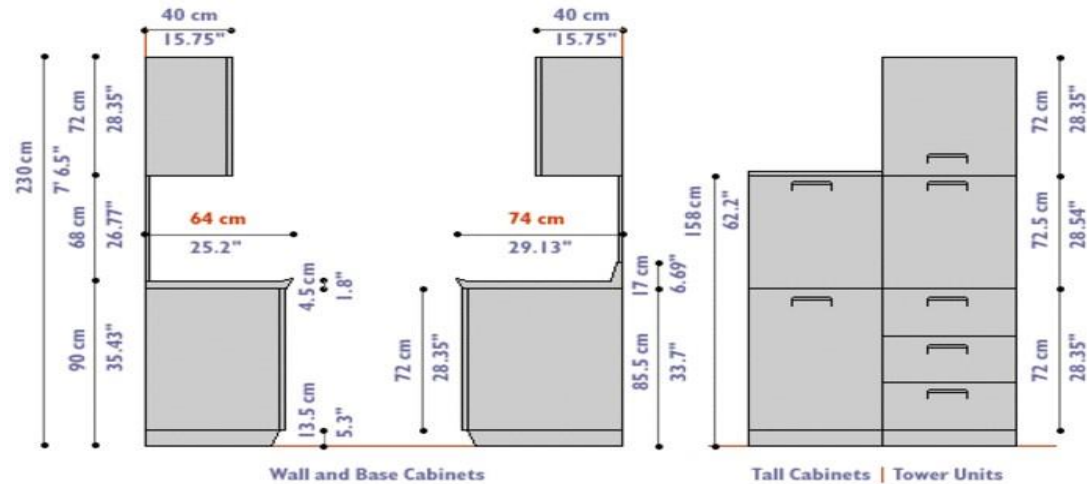
STEP FOUR: APPLIANCES

Common appliances typically come in standard sizes, but it is important that we have the measurements. Luxury appliances such as cooktops, range hoods, warming drawers, and wine chillers have dimensions that can vary drastically.

APPLIANCE BRAND/MODEL	WIDTH	DEPTH	HEIGHT
MICROWAVE:			
REFRIGERATOR:			
DISWASHER:			
COOKTOP:			
OVEN:			
HOOD:			
OTHER:			

STEP FIVE: CEILING HEIGHT

Accurate ceiling height measurements are very important when determining which wall cabinets and crown molding you want in your new kitchen. It is very important to take several measurements as the height can vary in different spots in the room. Many older homes have soffits above their wall cabinets that need to be taken into consideration when creating your design.



STEP SIX: SEND PHOTOS AND SUBMIT DOCUMENTS

Now that you have completed the measuring guide, it is time to take some photos of your current space. Make sure to include pictures of each wall that will contain cabinets.

WEBSITE: GO TO OUR FREE DESIGN PAGE
AND SUBMIT THEM THERE.



EMAIL: SUBMIT THEM TO OUR EMAIL AT
INFO@THECABINETSAYER.COM



